



POLLUTION INCIDENT RESPONSE MANAGEMENT PLAN (PIRMP)

HUNTER REGIONAL LIVESTOCK EXCHANGE

ISSUE DATE: JULY 2025

Table of Contents

1. PURPOSE	3
2. SCOPE	3
3. DEFINITIONS	3
4. DETAILS	4
5. POLLUTION INCIDENT – PERSON(S) RESPONSIBLE.....	4
6. NOTIFICATION OF RELEVANT AUTHORITIES	5
7. NOTIFICATION OF NEIGHBOURS AND THE LOCAL COMMUNITY	6
8. DESCRIPTION OF LIKELIHOOD OF HAZARDS.....	7
9. RE-EMPTIVE ACTIONS TO BE TAKEN	7
10. INVENTORY OF POLLUTANTS.....	8
11. SAFETY EQUIPMENT	10
12. COMMUNICATING WITH NEIGHBOURS AND THE LOCAL COMMUNITY	10
13. MINIMISING HARM TO PERSONS ON THE PREMISES.....	11
15. ACTIONS TO BE TAKEN DURING OR IMMEDIATELY AFTER A POLLUTION INCIDENT ..	14
16. COORDINATING WITH PERSONS AND AUTHORITIES	15
17. STAFF TRAINING.....	15
18. TESTING AND UPDATING OF THE PIRMP.....	16
 Figure 1 – Premises neighbour notification map.....	 6
Figure 2 – Premises overview.....	12
Figure 3 - Safety and pollution response equipment location.....	13



1. PURPOSE

RLX Operating Company Pty Limited (RLX) holds an Environment Protection Licence with the NSW Environment Protection Authority (EPA) for Central Tablelands Livestock Exchange (HRLX). As per the *Protection of the Environment Operations Act 1997* (the POEO Act), the holder of an Environment Protection Licence must prepare, keep, test and implement a pollution incident response management plan (PIRMP) that complies with Part 5.7A of the POEO Act in relation to the activity to which the licence relates.

If a pollution incident occurs in the course of an activity so that material harm to the environment (within the meaning of section 147 of the POEO Act) is caused or threatened, the person carrying out the activity must immediately implement this plan in relation to the activity required by Part 5.7A of the POEO Act.

A copy of this plan must be kept at the licensed premises, or where the activity takes place in the case of mobile plant licences, and be made available on request by an authorised EPA officer and to any person who is responsible for implementing this plan.

Parts of the plan must also be available either on a publicly accessible website, or if there is no such website, by providing a copy of the plan to any person who makes a written request. The sections of the plan that are required to be publicly available are set out in section 74 of the Protection of the Environment Operations (General) Regulation 2022.

2. SCOPE

This PIRMP covers the HRLX site at 56 Gresford Road, Clydesdale NSW 2330 which operates under Environmental Protection Licence No. 12728.

3. DEFINITIONS

Pollution incident means an incident or set of circumstances during or as a consequence of which there is or is likely to be a leak, spill or other escape or deposit of a substance, as a result of which pollution has occurred, is occurring or is likely to occur. It includes an incident or set of circumstances in which a substance has been placed or disposed of on premises, but it does not include an incident or set of circumstances involving only the emission of any noise.

A pollution incident is required to be notified if there is a risk of 'material harm to the environment', which is defined in section 147 of the POEO Act as:

- a) Harm to the environment is material if:
 - i. It involves actual or potential harm to the health or safety of human beings or to ecosystems that is not trivial, or
 - ii. It results in actual or potential loss or property damage of an amount in aggregate, exceeding \$10,000 (or such other amount as is prescribed by the regulations), and
- b) Loss, including the reasonable costs and expenses that would be incurred in taking all reasonable and practicable measures to prevent, mitigate or make good harm to the environment.

Notification is required even where 'harm to the environment is caused only in the premises where the pollution incident occurs', as specified in 147(2).

4. DETAILS

ENVIRONMENTAL PROTECTION LICENCE DETAILS

Name of licensee:	RLX Operating Company Pty Limited (ABN: 90 129 963 935)
EPL number:	12728
Premises name and address:	Hunter Regional Livestock Exchange 56 Gresford Road, Clydesdale NSW 2330
Company or business contact details:	Address: Level 4, Suite 20, 717 Bourke St, Docklands VIC 3008 Phone: 1300 709 919 Email: enquiries@rlx.com.au
Website address:	www.rlx.com.au
Scheduled activity/activities on EPL:	Livestock intensive activities
Fee-based activity/activities on EPL:	Animal accommodation

5. POLLUTION INCIDENT – PERSON(S) RESPONSIBLE

EMERGENCY CONTACTS

PIRMP activation – Primary Contact	Name: Adam Bates Position: Business Manager, HRLX Business hours contact number: 0429 433 006 After hours contact number: 0429 443 006 Email: adam.bates@rlx.com.au
Notifying relevant authorities	Name: Steven Fox Position: Environment & Sustainability Manager Business hours contact number: 0460 368 115 After hours contact number: 0460 368 115 Email: steven.fox@rlx.com.au
Managing response to pollution incidents	Name: Adam Bates Position: Business Manager, HRLX Business hours contact number: 0429 433 006 After hours contact number: 0429 433 006 Email: adam.bates@rlx.com.au

6. NOTIFICATION OF RELEVANT AUTHORITIES

RELEVANT AUTHORITIES	CONTACT NUMBER(S)
EPA NSW	131 555
Fire and Rescue NSW / Rural Fire Service	000*
NSW Health	(02) 9391 9000
SafeWork NSW	131 050
Singleton Shire Council	(02) 6578 7290

- * The 000 number shall be contacted for emergency situations. For non-emergency situations, notification shall be made in writing to firesafety@fire.nsw.gov.au.

7. NOTIFICATION OF NEIGHBOURS AND THE LOCAL COMMUNITY

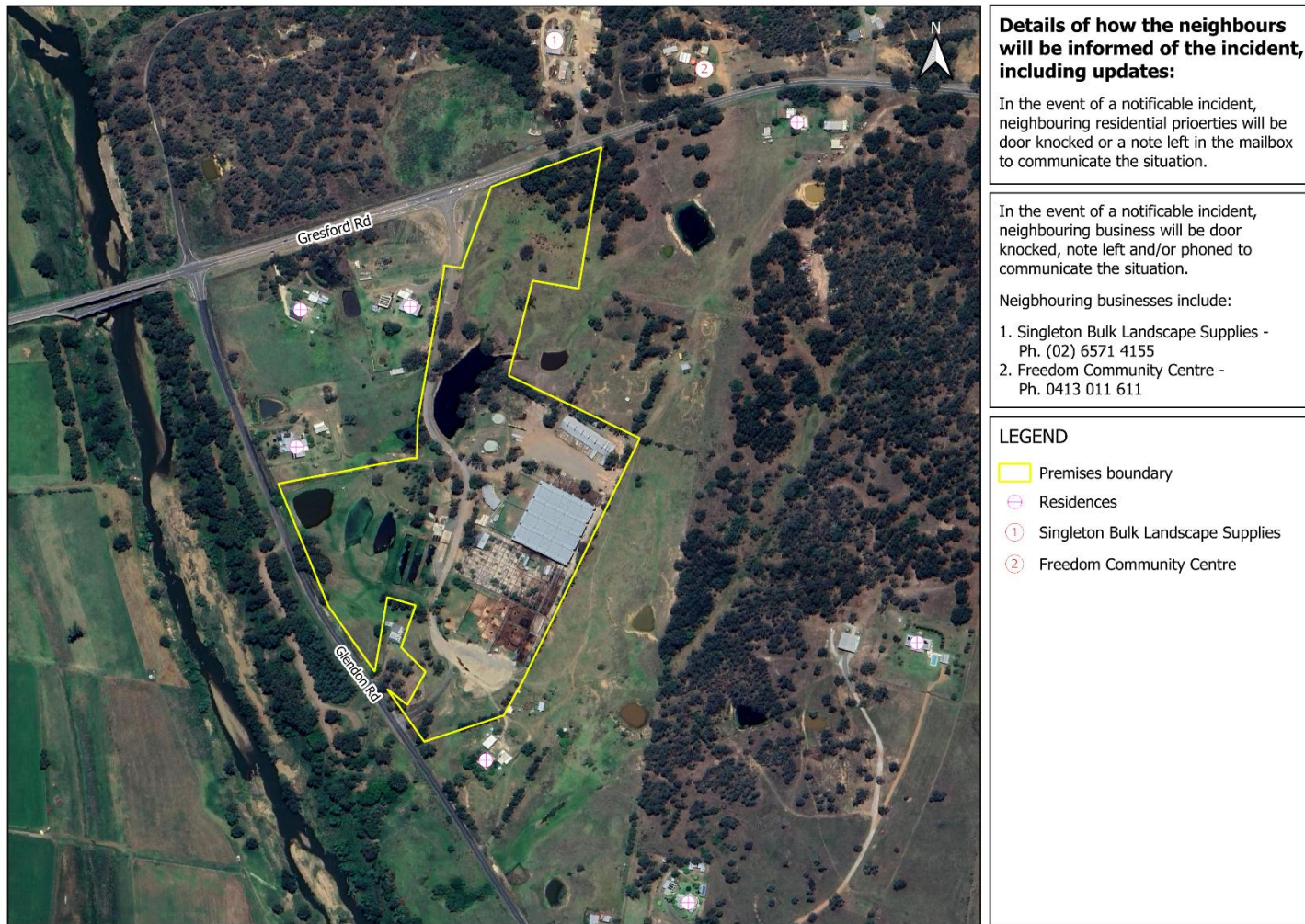


Figure 1 – Premises neighbour notification map

8. DESCRIPTION OF LIKELIHOOD OF HAZARDS

POTENTIAL HAZARD	LIKELIHOOD
Spill of effluent offsite / river	Medium
Surface run off from effluent irrigation to surface waters	Medium
Failure to contain effluent treatment system water	Low
Failure to suitably contain cattle waste materials	Low
Contamination of surface water wetland	Low
Chemical leak of spill contaminating the environment and / or injury to personnel	Low
Fuel leak or spill contaminating the environment and / or injury to personnel	Low
Fire – Grassfire destroying infrastructure and / or injury to personnel	Low
Fire – Combustible hay destroying infrastructure and / or injury to personnel	Low
Fire – Vehicle Fire destroying infrastructure and / or injury to personnel	Low

9. RE-EMPTIVE ACTIONS TO BE TAKEN

Specific pre-emptive actions for the corresponding hazards identified in the earlier section:

- a) Provision of a dedicated chemical storage area with bunding and spill containment kits.
- b) Provision of dedicated fuel storage area with bunding and spill containment kits.
- c) The property boundary fence to be kept mown and clear of debris (where practicable).
- d) Regular monitoring of stored hay / fodder for heat.
- e) Ensure the kitchen has sufficient appropriate fire extinguisher and fire blanket.
- f) Ensure fire extinguishers are located at strategic points within the site.
- g) Ensure screened solids is appropriately managed in accordance with the solids management procedure.
- h) Regular monitoring of effluent treatment system in accordance with the effluent management procedure.
- i) Effluent irrigation to be performed in accordance with the effluent management procedure.
- j) Quarterly sampling in accordance with Environmental Protection Licence requirements.

In general:

- c) Staff induction prior to or at commencement of employment
- d) Regular staff meetings
- e) Use of Safety Data Sheets (SDS) information
- f) Saleyard advisory meetings
- g) Annual internal environmental compliance audit

10. INVENTORY OF POLLUTANTS

POLLUTANT	TYPE	MAXIMUM QUANTITY	LOCATION
Bulk diesel	Flammable liquid	1000 Litres	Chemical Store
Unleaded petrol	Flammable liquid	70 Litres	Chemical Store
Honda premium engine oil 10W-30API	Oils/lubricants	4 Litres	Chemical store
Valvoline super diesel engine oil 15W-40	Oils/lubricants	10 Litres	Chemical store
New Holland hydraulic transmission oil	Oils/lubricants	5 Litres	Chemical store
Gulf Western heavy duty diesel engine oil 15W-40	Oils/lubricants	25 Litres	Chemical store
Diggers all-purpose thinner premium grade	Solvent	1 Litre	Chemical store
Adama Lynx WG herbicide (metasulfuron methyl)	Herbicide	0.5 Kilograms	Chemical store
Husquvarna HP 2 stroke oil	Oils/lubricants	1 Litre	Chemical store
Roundup Ultramax	Herbicide	1 Litre	Chemical store
Stihl 2 stroke lube 50:1	Chemical	1 Litre	Chemical store
Heavy duty liquid acid drain cleaner	Chemical	1 Litre	Chemical store
Penrite gear oil premium mineral 85W-Ho	Oil/lubricant	2.5 Litres	Chemical store

POLLUTANT	TYPE	MAXIMUM QUANTITY	LOCATION
Premium Enerpac hydraulic oil HF-105L	Oils/lubricants	5 Litres	Chemical store
Apparent shatter 750WG	Herbicide	1 Kilogram	Chemical store
Apparent MCPA 750 selective herbicide	Herbicide	5 Litres	Chemical store
Garrick oils soluble cutting oil	Oils/lubricants	5 Litres	Chemical store
Castrol EPX 85W/140 differential & manual transmission fluid	Oils/lubricants	3 Litres	Chemical store
Dow garlon 600	Chemical	10 Litres	Chemical store
Best-one algae eater	Chemical	25 Litres	Chemical store
Admin chelates cupricide	Chemical	20 Litres	Chemical store
Cyndan algae died B	Chemical	15 Litres	Chemical store
Husqvana 4 stroke oil 10W-30	Oils/lubricants	4 Litres	Chemical store
Dasco chlorodet multipurpose sanitising solution	Chemical	5 Litres	Chemical store
Australian export wet look tyre shine aerosol	Aerosol	0.4 Kilograms	Workshop

11. SAFETY EQUIPMENT

Safety equipment provided on the site includes:

- Spill kits
- Fire extinguishers
- Fire blankets
- First aid equipment
- SDS's to be kept in the maintenance and administration office
- Dangerous goods manifest to be kept in the maintenance shed and administration building, where required.
- PPE to be available in the maintenance shed and administration building

12. COMMUNICATING WITH NEIGHBOURS AND THE LOCAL COMMUNITY

The nature and type of potential pollutant incidents for this site are limited, however if an environmental incident on site is likely to impact neighbouring businesses or the local community, surrounding neighbours will usually be contacted either by phone, SMS, email, door knocking or through information left at the place of residence by a HRLX representative to notify them of a situation.

Communication methods will be used on a case-by-case basis, but in all situations, HRLX will attempt to notify those neighbours likely to be directly affected as soon as possible.

Ongoing communications with the neighbouring businesses/residents will be maintained until such time as the incident is rectified.

IMMEDIATE NEIGHBOUR	ADDRESS	CONTACT DETAILS
Neighbour 1	GRESFORD ROAD CLYDESDALE 2330	n/a
Neighbour 2	15 Glendon Road, Clydesdale NSW	n/a
Neighbour 3	71 GLENDON ROAD CLYDESDALE 2330	n/a
Neighbour 4	34 GRESFORD ROAD CLYDESDALE 2330	n/a
Neighbour 5	102 GRESFORD ROAD CLYDESDALE 2330	n/a
Singleton Bulk Landscape Supplies	71 GRESFORD ROAD FERN GULLY 2330	(02) 6571 4155
Freedom Community Centre	87 GRESFORD ROAD FERN GULLY 2330	0413 011 611



13. MINIMISING HARM TO PERSONS ON THE PREMISES

Should a pollution incident occur, it must be immediately reported to the Business Manager (or Assistant Manager in their absence) who will assess the incident and the likely impact on persons on the premises. If appropriate, the Business Manager (or delegate) shall initiate a site evacuation utilising the public address system.

14. MAPS



Figure 2 – Premises overview

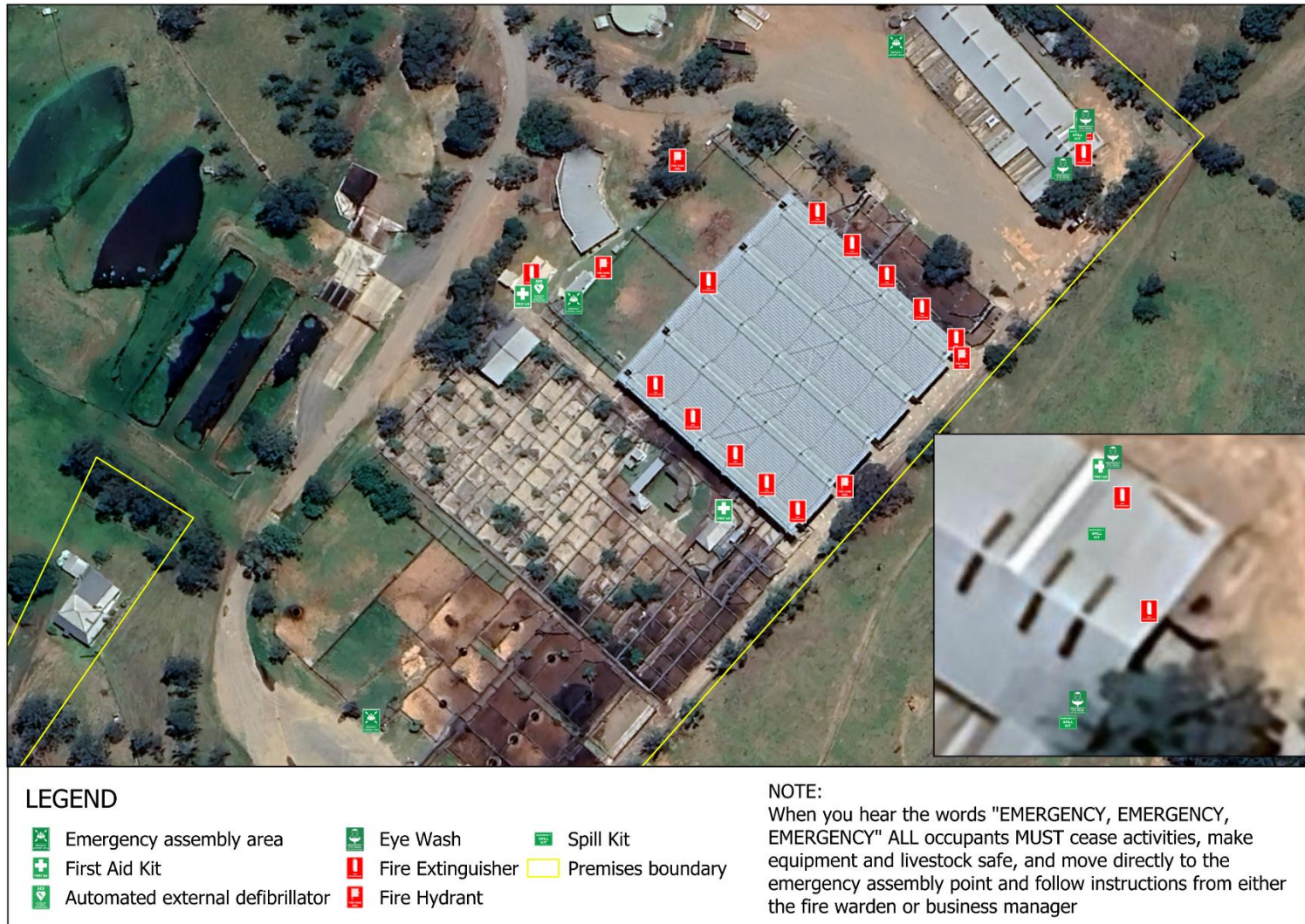
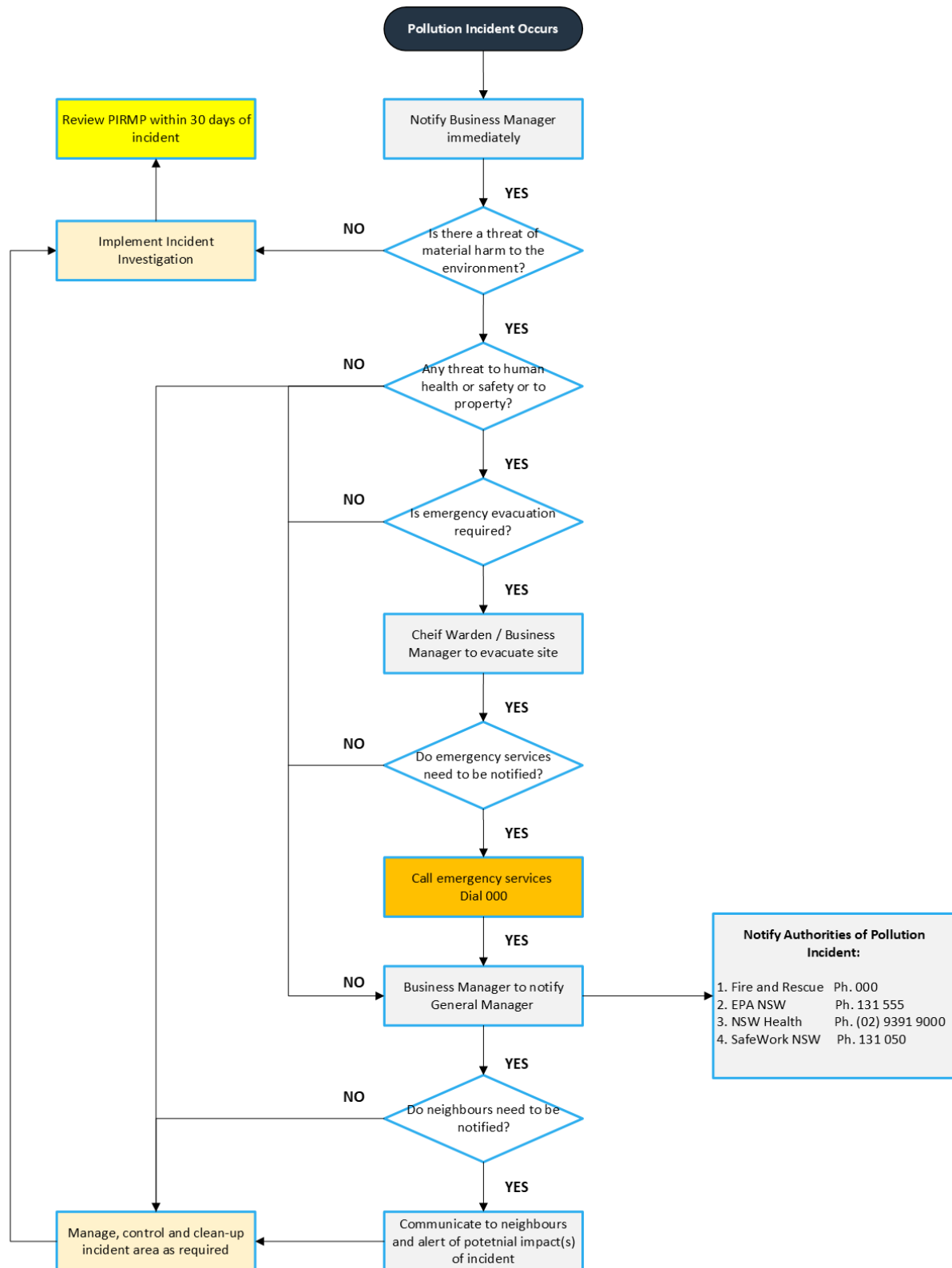


Figure 3 - Safety and pollution response equipment location

15. ACTIONS TO BE TAKEN DURING OR IMMEDIATELY AFTER A POLLUTION INCIDENT



16. COORDINATING WITH PERSONS AND AUTHORITIES

All staff must notify the Business Manager, immediately after the person becomes aware of a pollution incident. The Business Manager will notify the General Manager in accordance with the RLX Hazard and Incident Reporting Procedure.

If the pollution incident presents a risk of 'material harm to the environment' the General Manager (or delegate) will immediately notify the relevant Authorities after being notified or otherwise becoming aware of the pollution incident.

The following information shall also be provided to the relevant Authorities:

- a) The time, date, nature, duration and location of the incident,
- b) The location of the place where pollution is occurring or is likely to occur,
- c) The nature, the estimated quantity or volume and the concentration of any pollutants involved, if known,
- d) The circumstances in which the incident occurred (including the cause of the incident, if known),
- e) The action taken or proposed to be taken to deal with the incident and any resulting pollution or threatened pollution, if known,
- f) Other information prescribed by the regulations.

17. STAFF TRAINING

All staff affected by the content of this document will receive instruction or explanation on the relevant sections or requirements of the document.

18. TESTING AND UPDATING OF THE PIRMP

The PIRMP shall be tested once every 12 months and within one month of any pollution incident occurring. The objective of testing is to assess whether the information included in the PIRMP is accurate, current and is capable of being implemented in a workable and effective manner.

The routine testing will be performed as a desktop exercise and the name of the person(s) carrying out the test will be recorded in the PIRMP test report below. If the PIRMP is updated the date and details on amendments to the plan shall also be recorded.

PIRMP TEST RECORD			
DATE	PERSONNEL INVOLVED	ASPECTS TESTED	TEST FINDINGS
PIRMP DOCUMENT REVIEW RECORD			
REVIEW DATE	DETAILS	AUTHOR	
17/07/2023	Revision of key contacts	Cameron Clode	
16/06/2024	Update contacts	Steven Fox	
7/07/2025	Complete document rewrite including contacts, maps and pollutant inventory	Steven Fox	



APPROVER LIST

NAME	POSITION	APPROVAL / REVIEW DATE
Adam Bates	Business Manager- HRLX	7/07/2025